



Sunnyvale CERT Class 63



Local CERT Topics
February 6, 2024



Today's Topics



- Local Hazards and Resources
- Sunnyvale CERT roles
- Sunnyvale CERT mobilization
- CERT Size-Up
- Volunteer protection laws
- Crime scenes
- Opportunities for further training

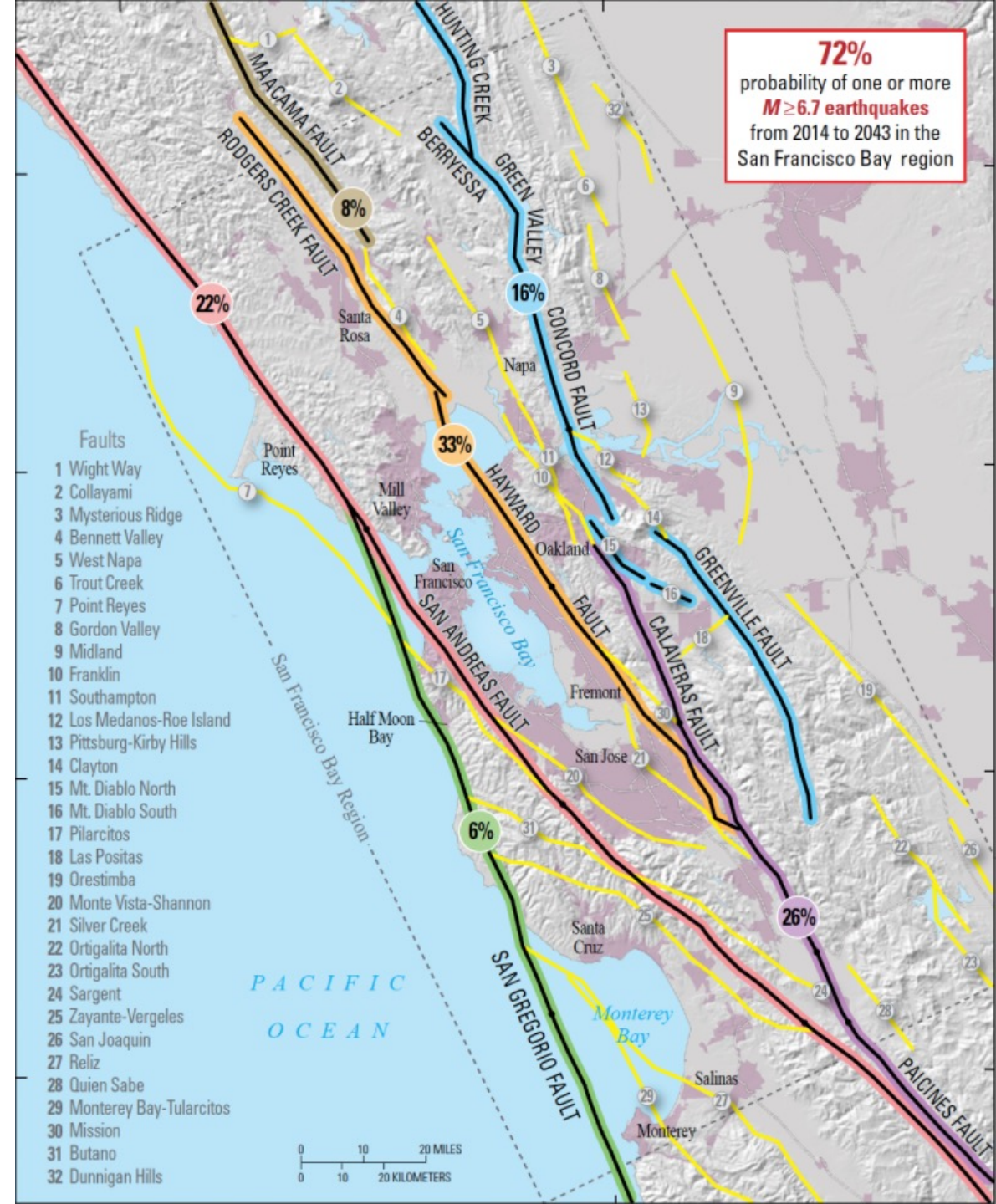




Earthquakes

- There are faults all around us
- The Big One: “when” not “if”
- Earthquakes can cause:
 - Injuries and property damage
 - Displaced residents (evac)
 - Fires
 - Utility outages

See [Hazard GIS](#)

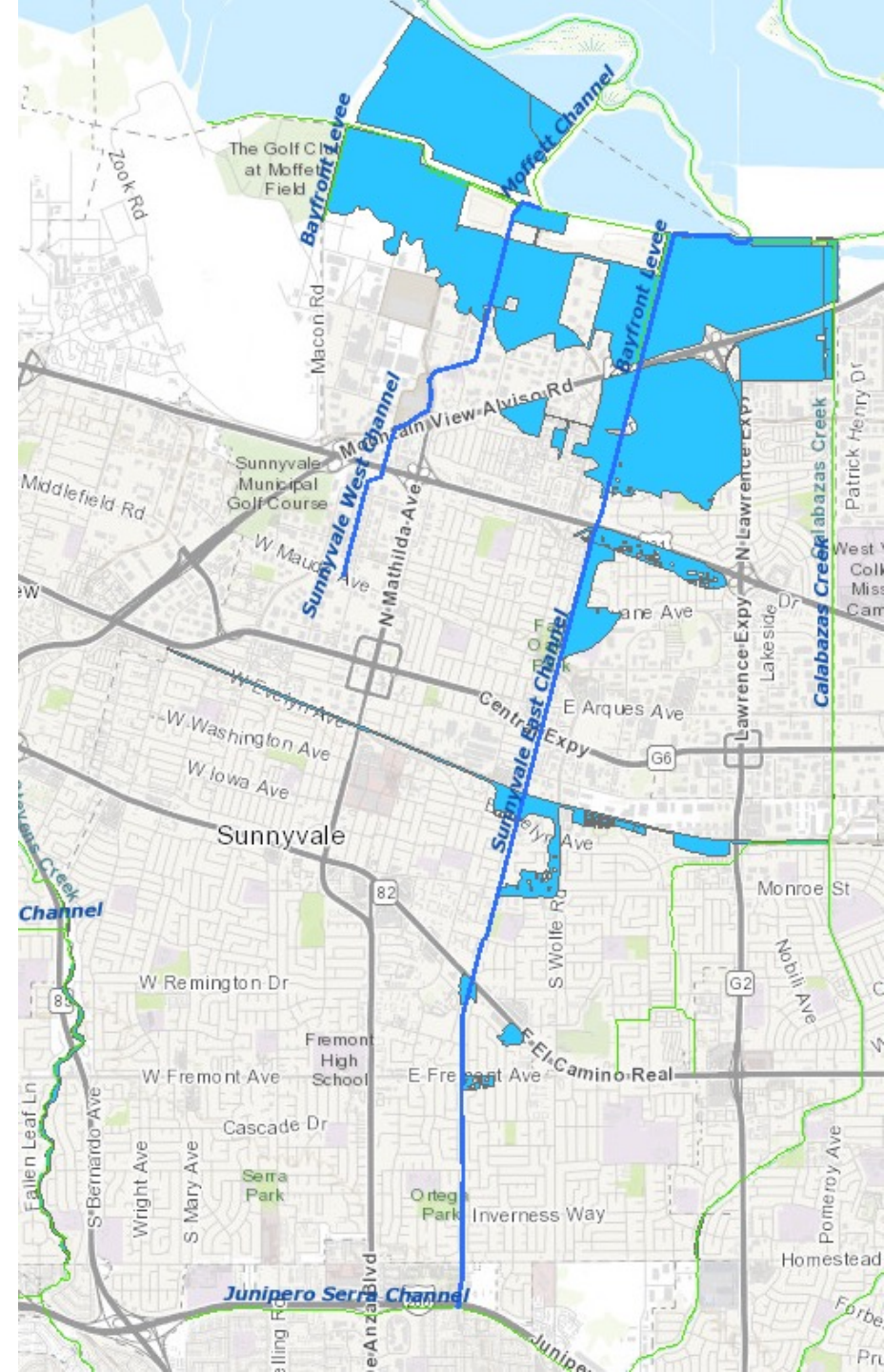




Flooding

- Mostly northern part of the city, but also along some waterways
- Industrial and residential
- Flooding can result in:
 - Property damage
 - Displaced residents (evacuations)
 - Utility outages
 - Sanitation issues (sewage)

[Sunnyvale Flood Zone Viewer](#)





Utility Outages



- Power

- Public Safety Power Shutoffs
- No gas stations, ATMs, credit card purchases, etc.

- Water

- Earthquake damage to water infrastructure
 - Northern Sunnyvale gets most of its water from Hetch Hetchy in Yosemite
 - Southern Sunnyvale gets most of its water from San Joaquin Delta
- Drought

- Communications

- Overloaded after any disaster



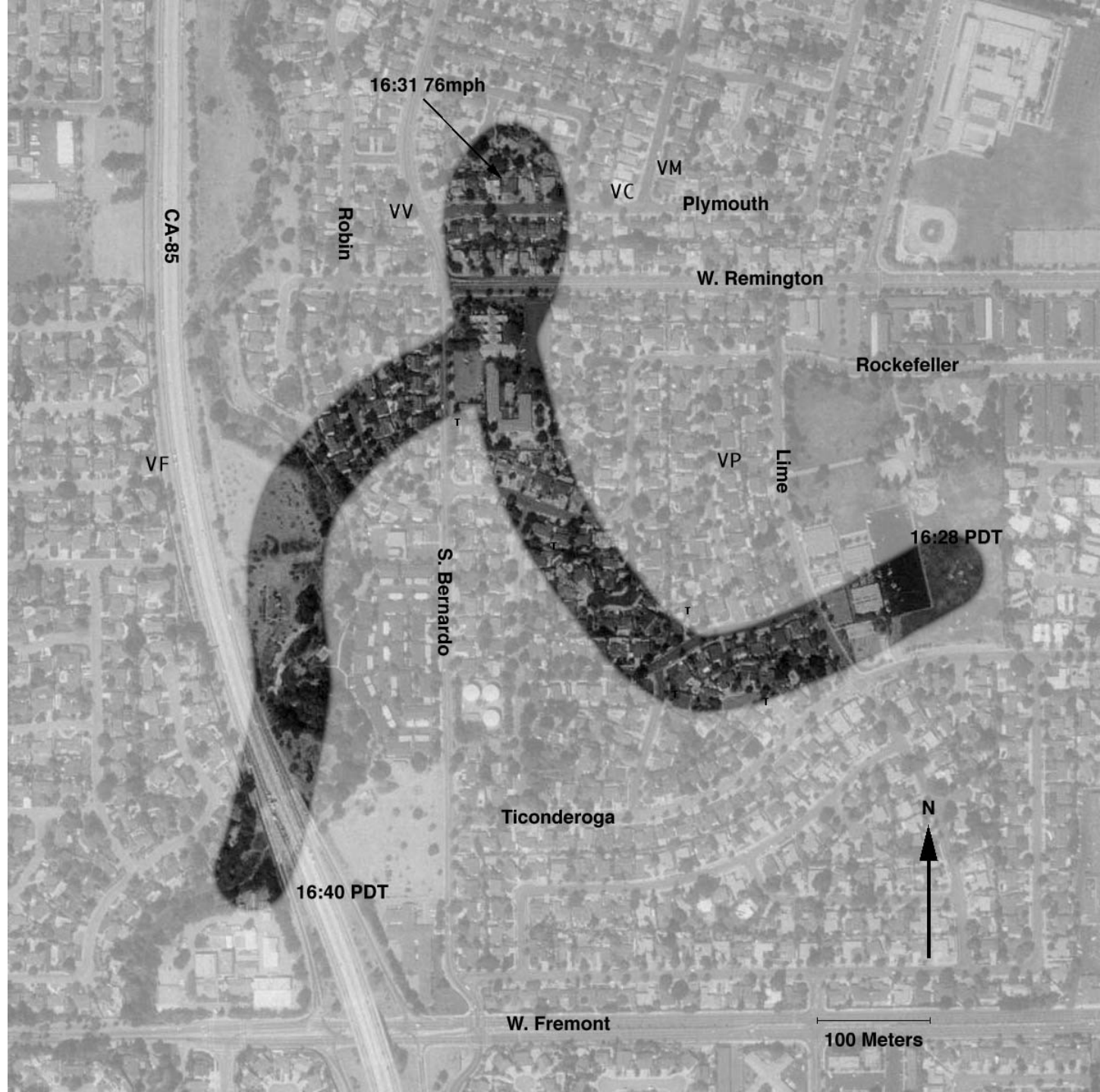


Tornadoes

May 4, 1998

SERV
SUNNYVALE EMERGENCY
RESPONSE VOLUNTEERS

CERT
COMMUNITY EMERGENCY
RESPONSE TEAM



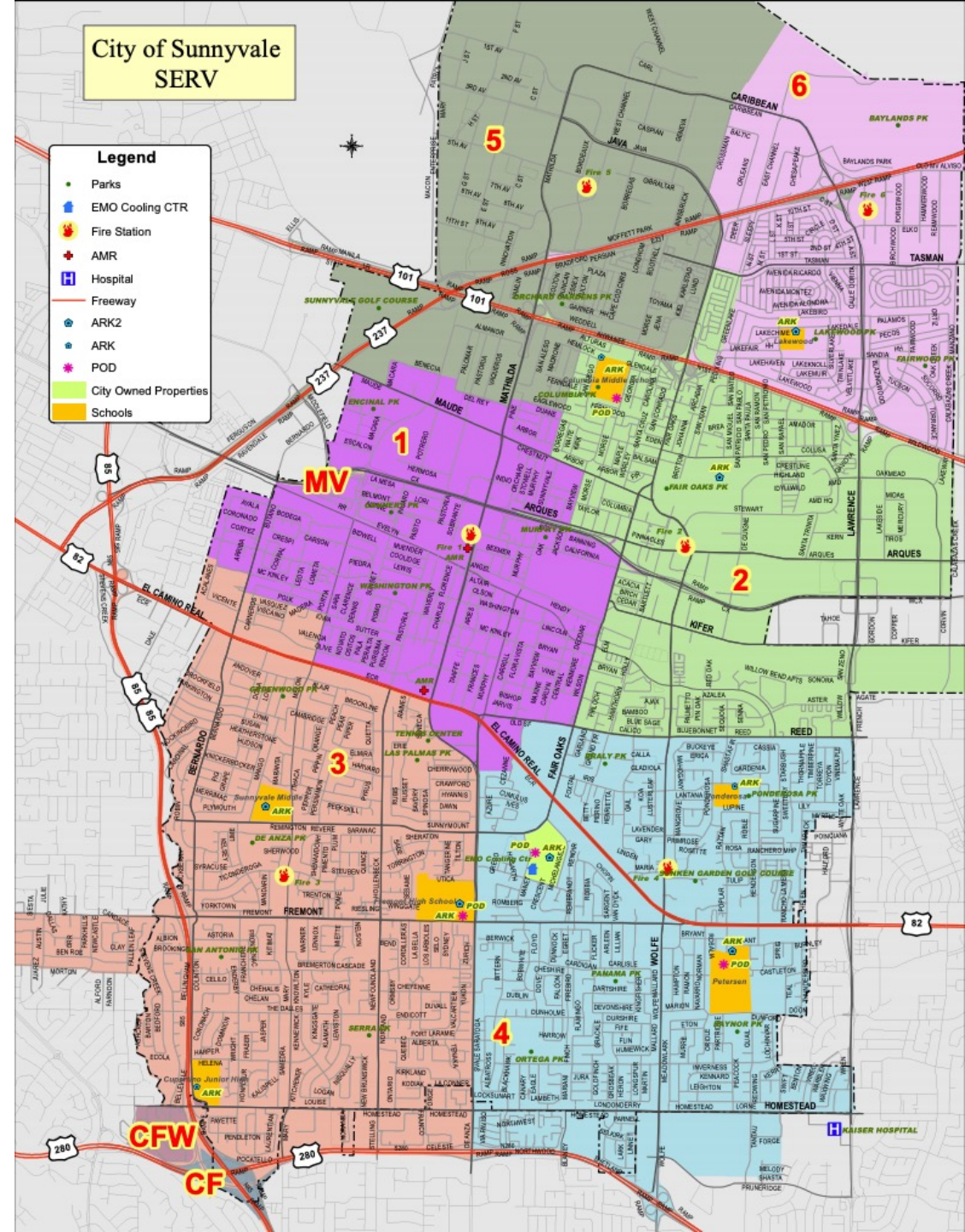


CERT Resources

- Fire Stations
- Arks
- Shelters
- Staging Areas



[Full-Size Map](#)





Sunnyvale CERT Roles



- Help your family in an emergency or a disaster
- Help your neighbors after a disaster
 - Sizing up the scene and steering people away from dangers
 - Damage assessment, triage, first aid, disaster psychology, etc.
 - Not formally activated by the DPS / OES
- Help DPS after a disaster (deployment teams)
 - Formal activation, in the ICS chain of command
 - Crowd and traffic management, shelter operations, distribution
- Help DPS during normal times
 - Public service events





Deployment Team Mobilization



- When DPS requests help, OES will activate team(s)
 - When phones are working, activated by text message
 - When phones are down, activated by 1680 AM broadcast
- Activation message says which staging area to go to
 - No specific assignment details
 - Team members report to staging when able, with go-kits
 - Staging areas have additional equipment
- Assignments are given out at staging area
- Communications back to OES by phone or radio





Good Samaritan Law (CA HSC §1799.102)



Defense against a liability suit when providing care:

- at the scene of an emergency
- in good faith
- without compensation
- within scope of training



Does not apply to:

- licensed medical professionals
- gross negligence
- willful or wanton misconduct



Disaster Service Worker (CA LAB §4350–4355)



Worker's Compensation insurance against injury when:

- registered and sworn as a DSW
- activated by the city (for real or for training)
- supervised by the city



Same liability immunities as government officials performing similar work, when acting as authorized

- Does not apply for willful or gross negligence, criminal acts, etc.
- This is a defense when being sued; it does not prevent being sued



CERT volunteers are special ... but not too special



CERT training does not give you the legal right to:

- Go anywhere the public isn't allowed
- Physically restrain any person
(e.g., to prevent them from entering an unsafe building)
- Medically treat anyone without consent
- Perform any invasive medical procedure
 - You can't administer an Epi-Pen in CA without a special class and license
- Prescribe or administer any drug
- Set a fracture



Crime Scenes



- Avoid disturbing a crime scene
 - Unless necessary to treat a life-threatening injury
- Don't enter a crime scene
 - Unless there are (or may be) victims needing treatment
- Establish a perimeter and try to keep bystanders out

- Treat any scene of death as a crime scene
 - Don't move the deceased people
 - Exception: death in a medical treatment area





Further Training



SERV Training:

- Personal Emergency Preparedness
- CERT Deployment Teams (monthly training)
- Sunnyvale Neighborhoods Actively Prepare (SNAP)
- Sunnyvale Amateur Radio Emergency Service (SARES)



Other:

- Stop the Bleed, CPR, Advanced First Aid, Epi-Pen Training
- Incident Command System
- Red Cross Shelter Management