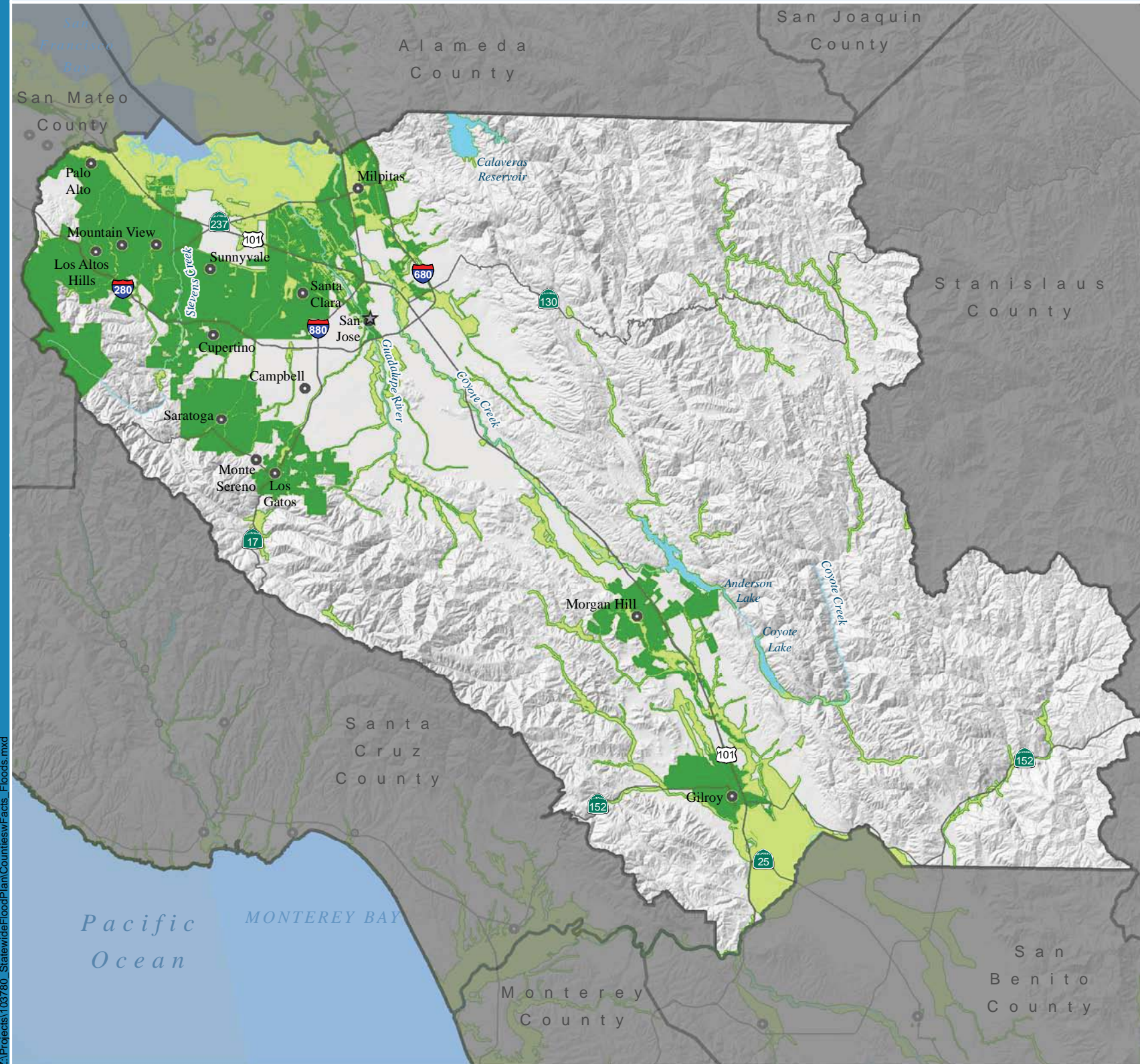


# 100-year and 500-year Floodplains



Z:\Projects\103789\_Statewide Flood Plan\Counties\Facts\_Floods.mxd

N  
0 2.5 5 10 Miles  
● City    — Highway    ■ 100-yr Floodplain    ■ Major Water Body  
○ Populated Place    ~ Major River    ■ 500-yr Floodplain    □ County

## Selected Flood Events by Event Year

- 1861-1862** Winter, The Great Flood, Guadalupe River
- 1955-1956** December-January, 1955 Christmas Flood, Coyote Creek, Stevens, Matadero, San Francisquito, Guadalupe River
- 1958** February-April, Penitencia, Guadalupe, San Tomas Aquinas, Stevens, Permanente, Matadero, San Francisquito
- 1962** October, Countywide
- 1968-1969** December-January, Winter '69 Storms, Salinas River, San Lorenzo River, Guadalupe River, Pajaro River
- 1982-1983** November-March, Winter Storms, Coyote Creek, Guadalupe River, Penitencia Creek, Calabazas Creek, Los Gatos Creek
- 1986** February 12-20, St. Valentine's Day Storm, Guadalupe River
- 1987** Coyote Creek
- 1988** February, Coyote Creek, San Francisquito Creek
- 1995** January-March, 1995 Christmas Flood, Guadalupe River, Los Gatos Creek, Llagas Creek, Upper Penitencia Creek, Coyote Creek, Pacheco Creek
- 1998** January-March, Calabazas Creek, Guadalupe River, Coyote Creek, Upper Penitencia Creek, Saratoga Creek, San Francisquito Creek, Matadero Creek
- 2000** Coyote Creek
- 2002** Guadalupe River
- 2005** December, Coyote Creek

## Flood Hazard Exposure

### County Statistics

Total Acreage:	835,231
Total Population:	1.7 million
Total Structures:	488,100
Total Value of Structures and Contents:	\$185.7 billion
Total Agricultural Acreage:	71,313
Total Value of Crops:	\$127.1 million

### Summary of Exposure to Flood Hazard Reported by County

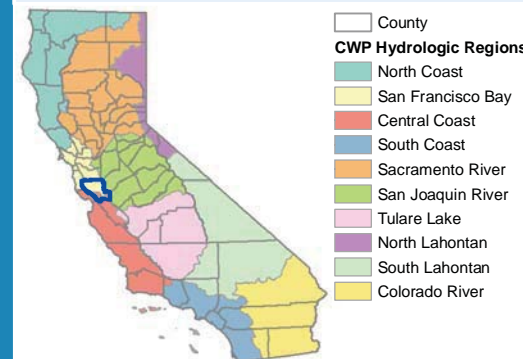
	100-yr Event	500-yr Event
Exposed Area (acres):	60,869	145,236
Percent of Area Exposed:	7	17
Population Exposed:	132,577	664,061
Percent of Population Exposed:	8	39
Structures Exposed:	37,069	201,571
Total Depreciated Replacement Value of Exposed Structures and Contents:	\$15.2 billion	\$84.3 billion
Exposed Crops (acres):	20,072	32,232
Value of Exposed Crops:	\$50.5 million	\$68.4 million
Department of Defense Facilities Exposed:	1	1
Essential Facilities Exposed:	49	287
High Potential Loss Facilities Exposed:	42	139
Lifeline Utilities Exposed:	9	14
Transportation Facilities Exposed:	210	536
Transportation Segments Exposed (miles):	134	394
Native American Tribal Land Exposed (acres):	0	0
Total Sensitive Plant Species Exposed:	38	40
Total Sensitive Animal Species Exposed:	40	42

Santa Clara County

## Types of Flooding

<b>Likely:</b>	<b>Present:</b>
Slow Rise	Engineered Structure Failure
Flash	
Debris Flow	
Stormwater	

## Hydrologic Regions



**Figure D-85**  
 Summary of Available Flood Types, Flood History, and Flood Hazard Exposure, Santa Clara County

DRAFT

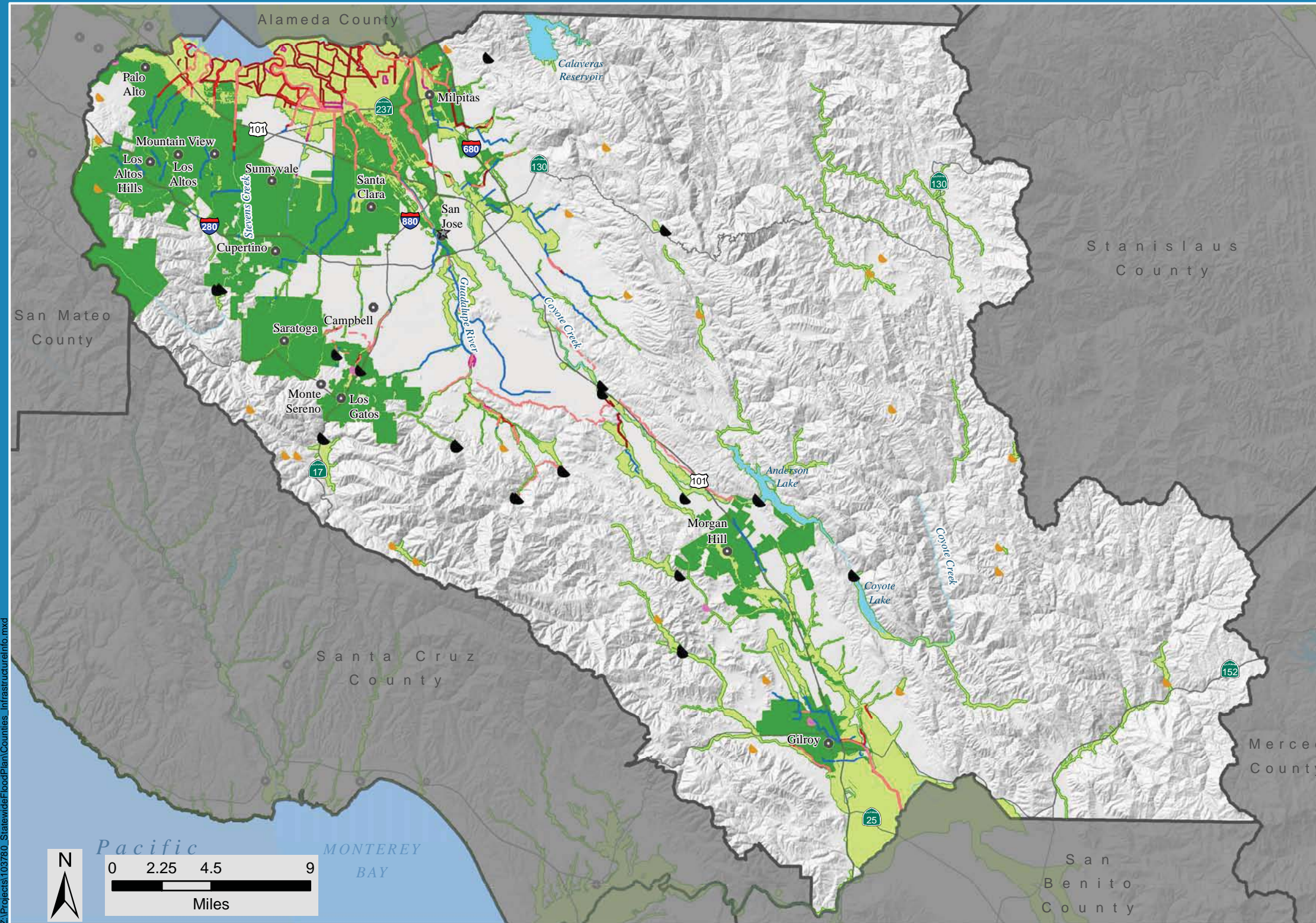
Mar 22, 2013



DISCLAIMER: The DWR did not develop all the displayed floodplain extents and cannot guarantee their accuracy.

# Summary of Available Flood Infrastructure Information

## Santa Clara County



### Flood Infrastructure GIS Data Received from Agencies Contacted:

- Dam
- Levee or Maintenance Road

**Non-GIS, PDF/Hard Copy Flood Infrastructure Data Received from Agencies Contacted (Not Shown On Map):**  
 No PDF/Hard Copy Data Received

**Agencies Contacted as Part of SFMP:**  
 Santa Clara Valley Water District  
 San Francisquito Creek Joint Powers Authority

**Planned Projects:**

Number of Local Projects:	23
Estimated Cost of Local Projects:	\$362.9 million
Number of USACE Projects:	6
Estimated Cost of USACE Projects:	\$1 billion

**Statewide GIS Data Sources:**  
 Cities derived from CAL FIRE incorporated city limit polygons, 2010. **Populated Places** from GNIS, 2011. **Counties** from CalAtlas, 2009. **Dams** modified from DWR, Bulletin 17-00, 2000. **CLD** layers are from California Levee Database, v2.2 r2, 2010. **NFHL** layers are from the National Flood Hazard Layer, FEMA, August 2011. **Highways** from TeleAtlas, 2004. **Rivers** and **Lakes** modified from DFG, N/A. **Floodplains** compiled for SFMP, 2011.  
**All other Flood Infrastructure GIS data, noted above, received from Agencies Contacted.**

Santa Clara County

**Figure D-86**  
 Summary of Available Flood Infrastructure Information, Santa Clara County

**DRAFT**

Mar 22, 2013

- |                            |                      |                        |                            |                        |                  |                   |
|----------------------------|----------------------|------------------------|----------------------------|------------------------|------------------|-------------------|
| <b>Statewide GIS Data:</b> | DWR Local Agency Dam | CLD Pump Station       | NFHL Levee                 | NFHL Control Structure | Highway          | 100-yr Floodplain |
| City                       | DWR Other Dam        | CLD Local Agency Levee | NFHL Flood Event Structure | NFHL Dike              | Major River      | 500-yr Floodplain |
| Populated Place            | NFHL Dam or Weir     | CLD Other Levee        | NFHL Channel               | NFHL Retaining Wall    | Major Water Body | County            |



**DISCLAIMER:** 1) Information displayed on the map does not represent all existing flood infrastructure in the county. Only infrastructure available as "Statewide GIS Data" or submitted in a GIS format by one of the interviewed agencies is shown. 2) The DWR did not develop all the displayed floodplain extents and cannot guarantee their accuracy.